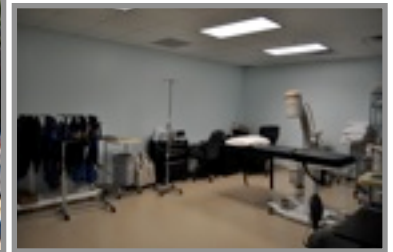


3060 COMMUNICATIONS PARKWAY

FOR LEASE

3060 COMMUNICATIONS PARKWAY, PLANO, TX, STE. 104



Contact: Mark Pittman

Cell: 972-897-0562

Email:

markp@wynmarkcommercial.com

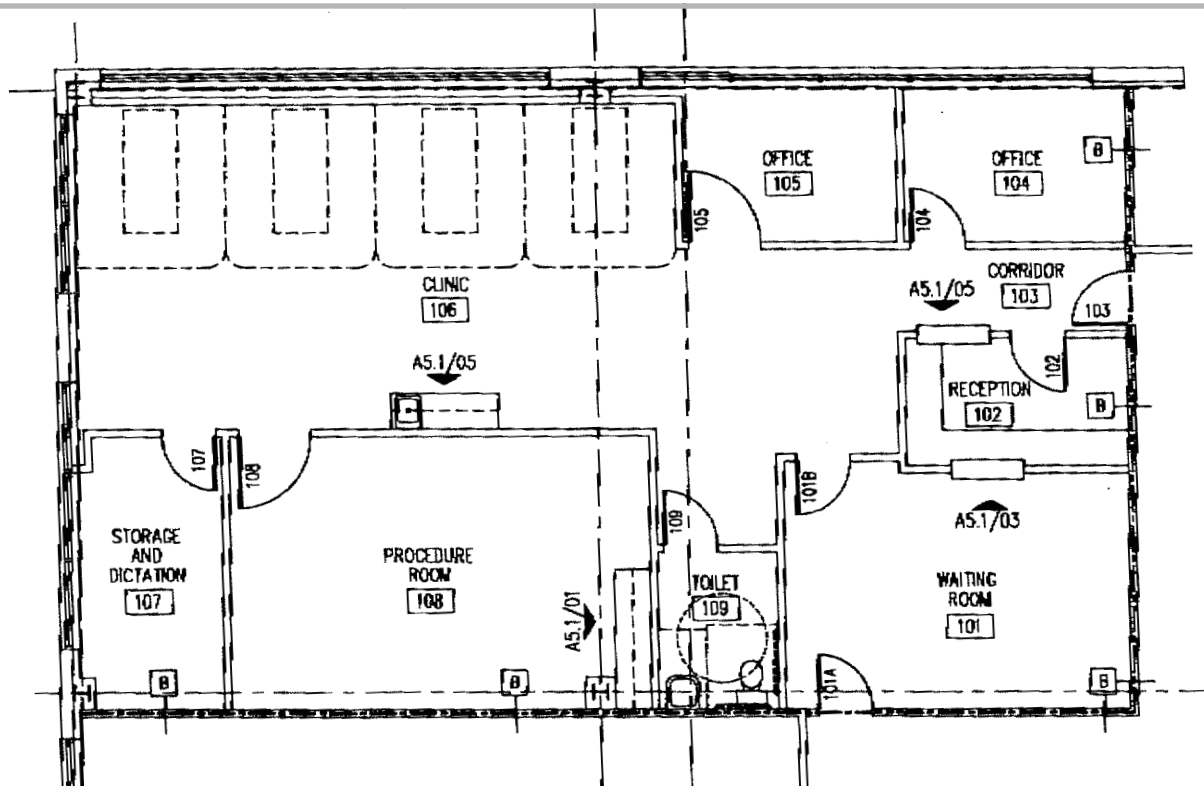
Medical Space Available for Lease!

Great 2nd Generation Space for lease next to THR Plano Hospital.

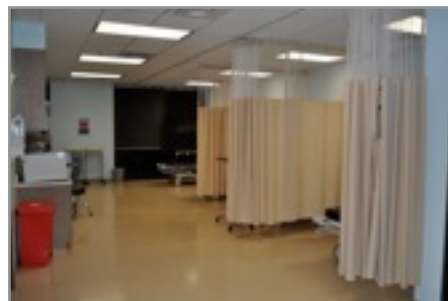
Call or email for more information and to set up a tour!



The information contained in this flyer is deemed to be reliable. Every effort was made to obtain accurate and complete information; however, no representation, warranty or guarantee, expressed or implied, may be made as to the accuracy or reliability of the information contained herein.



2,284 Gross Square Feet
Available.



Contact: Mark Pittman

Cell: 972-897-0562

Email:

markp@wynmarkcommercial.com



Why this location?

- Great location next to THR Plano Hospital
- Great synergy with other quality medical professionals.
- 5.0 parking spaces per 1,000 sf.
- Monument Signage Available.
- Immediate access to the Dallas North Tollway, George Bush Tollway and SH 121.
- Beautifully finished out space.
- Available for immediate occupancy.

The information contained in this flyer is deemed to be reliable. Every effort was made to obtain accurate and complete information; however, no representation, warranty or guarantee, expressed or implied, may be made as to the accuracy or reliability of the information contained herein.